

EZ-Travel Case

Created by TravelSmart, Inc.

User Manual



Table of Contents

Graphical Parts List.....	2-3
Assembly Instructions.....	4
Operation Instructions.....	5
Maintenance.....	6
Warranty Information.....	7
Service Center.....	8

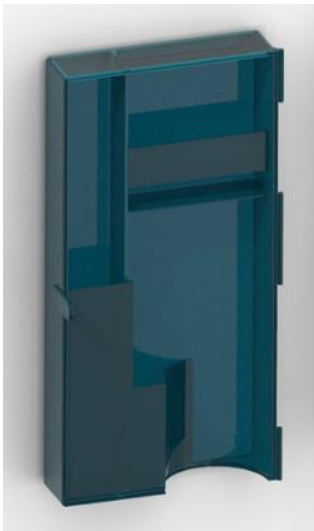
Graphical Parts List

This Product is assembled using two separate bases with compartments that are attached by a hinge and a hinge pin. The latch is attached on the outside to open and close the case.

If there are any replacement parts needed, such as hinges, please contact a team member located on the “Service Center” page or from our website:

<https://webpages.uncc.edu/ashaw43/ENGR1202Project/toiletriesmain.html>

Part #1 Left Base



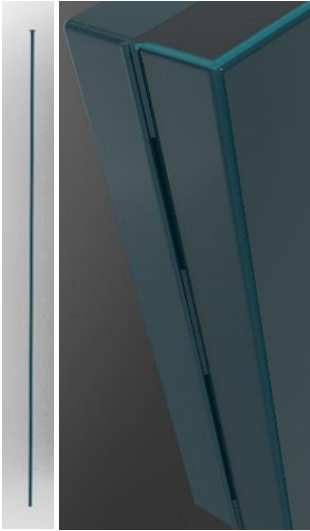
The Left Base is one of the primary components of the EZ-Travel case. It contains three compartments for storage of your toiletry items. The left compartment provides a separated space for your toothbrush, the top shelf holds a full-sized floss container as well as a travel-sized toothpaste tube, and the lower portion has storage for a small comb. A channel for the gasket runs around the outer edge of the left side, making the EZ-Travel case completely watertight. The latch is also included on the Left Base.



Part #2 Right Base

The Right Base is another primary component of the EZ-Travel case. It also contains three storage areas. The top shelf holds any standard travel-sized stick deodorant. The bottom half holds both a disposable razor and a small canister of shaving cream. The Right base includes a loop to hold the razor handle in place, as well as an extended round base beneath the shaving cream, which helps provide stability to the case while standing open during use.

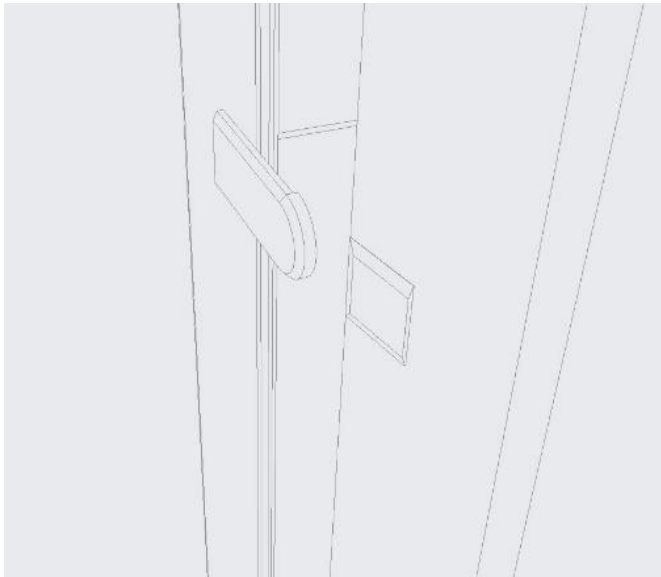
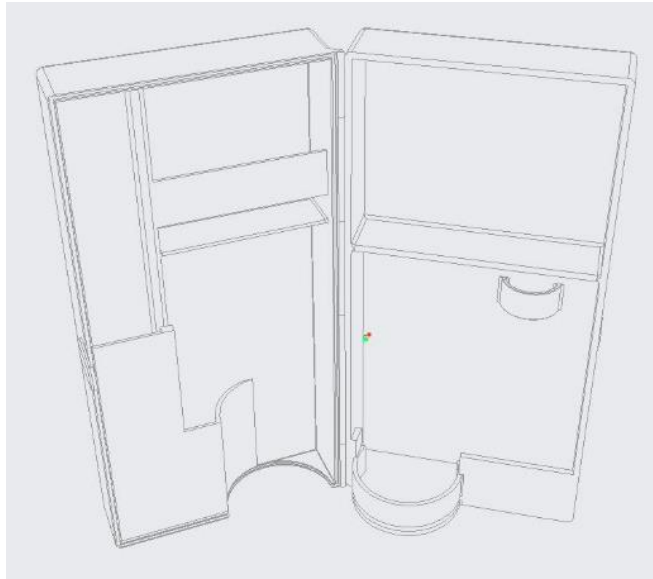
Part #3 The Hinge and Hinge Pin



The Hinge is formed of five pieces, three attached to the Left Base and two attached to the Right Base. Together, they run the full length of the EZ-Travel case, providing protection for the hinge and long-lasting durability. The Hinge Pin also runs the full length of the case, preventing loose parts, snags or wear and tear. This gives the EZ-Travel case the maximum support and strength.

Assembly Instructions

The EZ-Travel case will be shipped to you fully assembled and will not require any further action on your part. It is ready to go wherever you are! We do not recommend attempting to take the EZ-Travel case apart.



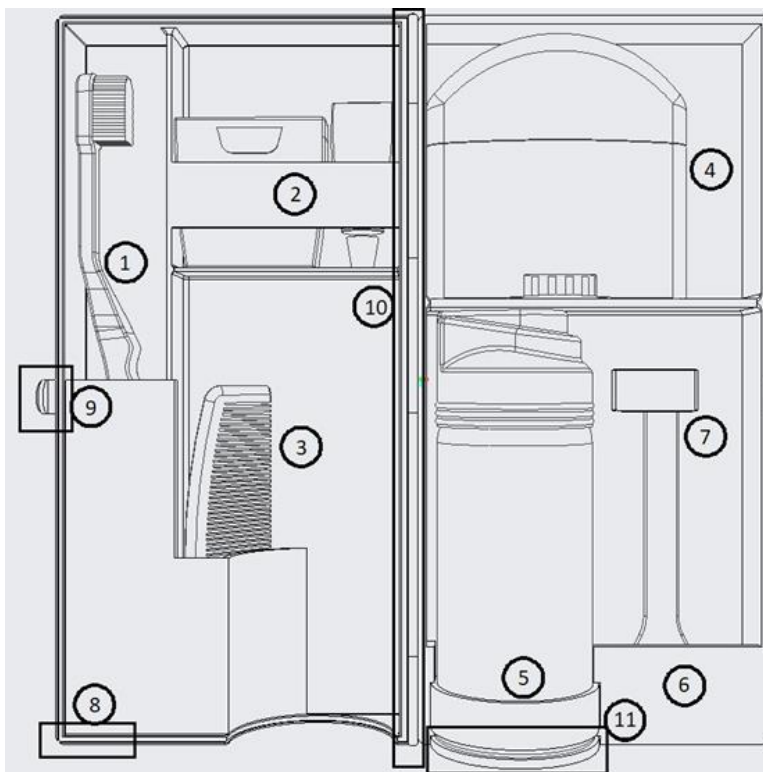
Note: This product is assembled before shipping using two separate bases with compartments that are attached by a hinge and a hinge pin. If there are any replacement parts needed, such as hinges, please contact a team member located on the “Service Center” page or from our website:

<https://webpages.uncc.edu/ashaw43/ENGR1202Project/toiletriesmain.html>

In the case of a replacement part, reassembly is a breeze. Simply line up the hinges and gently press the hinge pin down from the top through the hole. There’s nothing else to it!

Operation Instructions & Features

This product is designed to be portable, have a countertop stand, and visible compartments to easily access your items. It is designed to fit in any small compartments of your luggage, bookbag, purse, and even your jacket pocket. The instructions are simple. To open, use your fingers and to close simply squeeze the two sides of the case together until you hear a “snap.” Below you will see a features list that will aid in putting your toiletries into the right compartments.



List of Features:

1. Cutout cubby for full-sized toothbrush
2. Shelf to hold travel toothpaste and full-sized dental floss
3. Compartment to hold 4-inch comb
4. Shelf for travel-sized stick deodorant
5. Expanded space for travel-sized shaving cream can
6. Catch-all area to keep stray razor hairs away from toothbrush
7. Handle slides into clasp to keep razor secure in its place
8. Watertight gasket seals in moisture
9. Quick-release latch
10. Durable hinge
11. Expanded base to improve stability

Maintenance

To ensure proper sanitation and cleanliness, the EZ-Travel case should be washed between trips. While we suggest rinsing and drying your hygiene items such as your toothbrush, razor and comb, we also understand that sometimes that is not possible. Regular cleaning should be done to prevent buildup or bacterial growth. Because the EZ-Toiletry case is made of BPA-free polycarbonate, it is important to wash the case in warm water combined with a few drops of liquid detergent that has no harsh chemicals, scrubbing gently with a non-abrasive dish scrubber or washcloth, then use a microfiber cloth to dry. This process will prevent dirt and grit from scratching the plastic during cleaning, helping your case maintain its high quality that our company set it out to be.

Warranty Information

The EZ- Travel case is one of the most durable cases ever built. It is made from strong polycarbonate plastic that is water-resilient, BPA-free, and resistant to impact and fracture. The case also includes a waterproof gasket that prevents water from leaking out into your pocket or carry-on. If you encounter any problems with the case or if you are unsatisfied with our product, there is a 30-day money-back guarantee, and you will be refunded 100% of your purchase price. If any parts listed above are missing, damaged, or defective, please contact our customer service department at one of the emails listed on the next page.

Service Center

This User Manual (2021) has been updated with the correct information. Please refer to the provided information below for any questions, comments, and concerns regarding your EZ-Travel Case

Website:

<https://webpages.uncc.edu/ashaw43/ENGR1202Project/toiletriesmain.html>

Address:

9201 University City Blvd, Charlotte, NC 28223

Contact our team to provide you with the best customer satisfaction

<p>Amanda Shaw Lead Design and IT ashaw43@uncc.edu</p>	<p>Bryan Campbell Lead Design and Manufacturing ccamp115@uncc.edu</p>
<p>Jasmine Ramirez Lead Quality and Communication Jramir25@uncc.edu</p>	<p>Henry Hohl Lead Processing hhohl@uncc.edu</p>