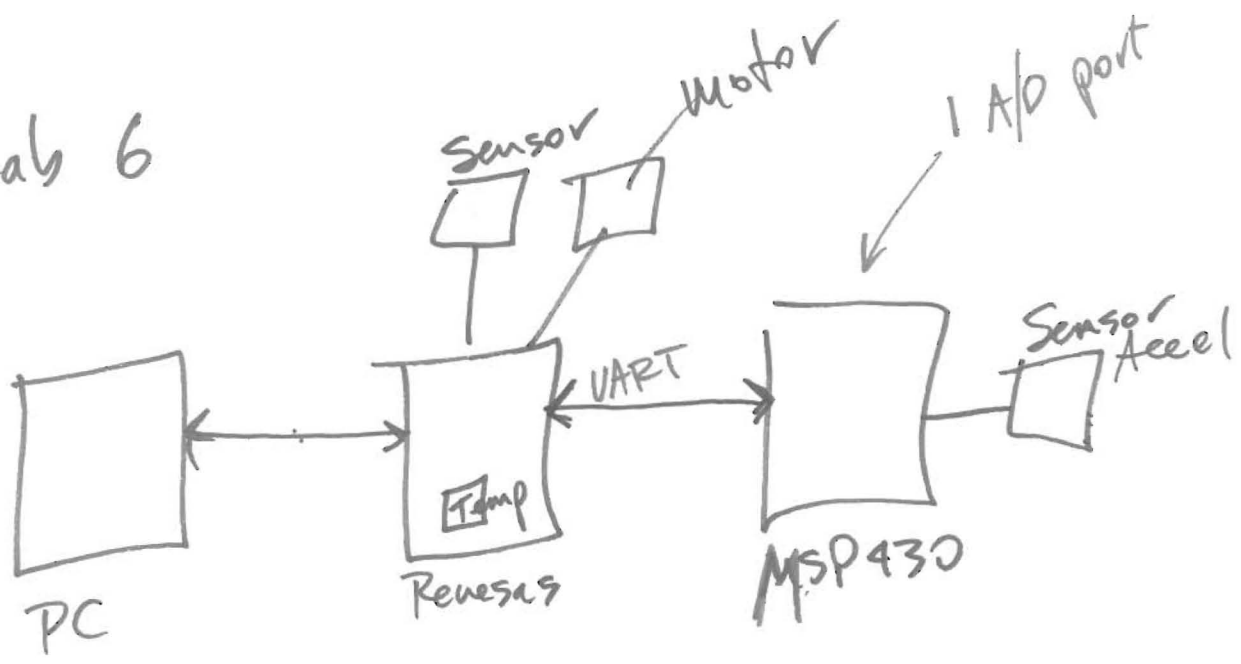


Lab 6

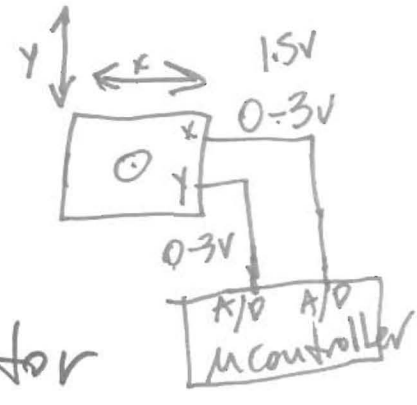


PC command to Renesas

- S → response will be sensor data
- I → increase RPM of motor by 50 RPM
- D → decrease RPM of motor by 50 RPM

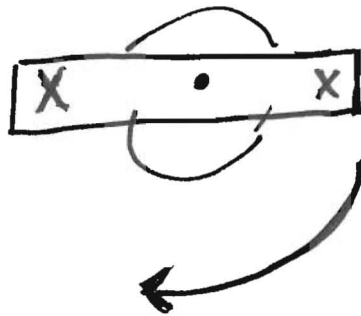
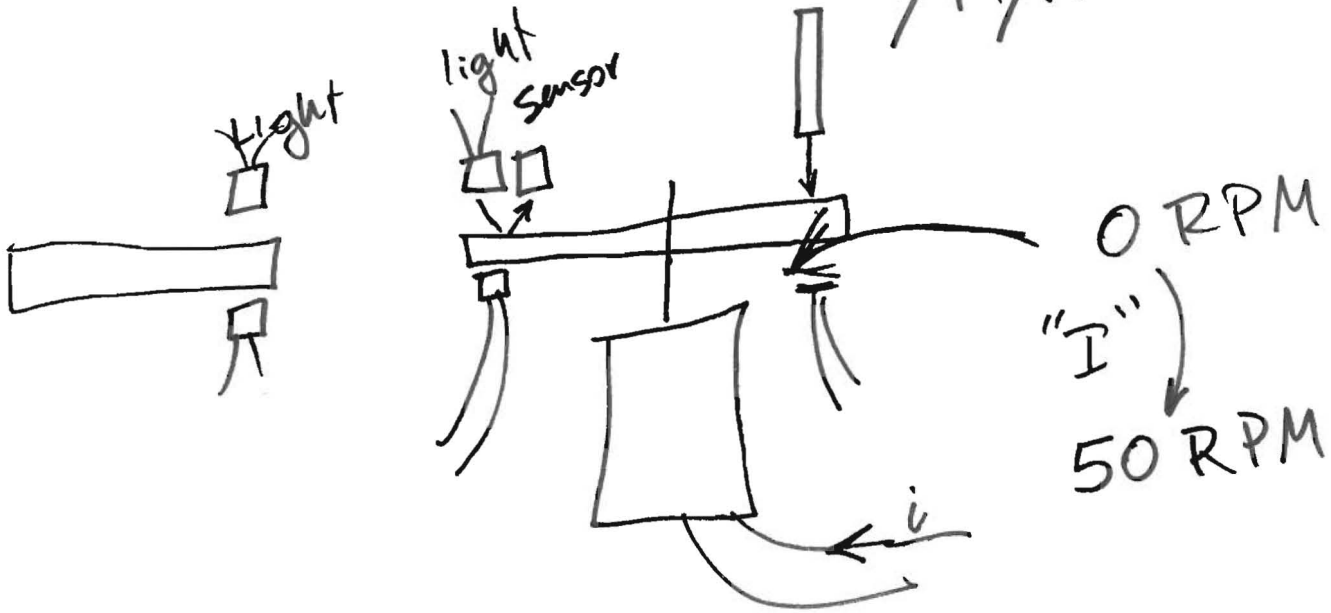
MSP 430 → Accelerometer (tilt - 2D)

Renesas Sensor → verify speed of motor
Temp sensor



4/19/10

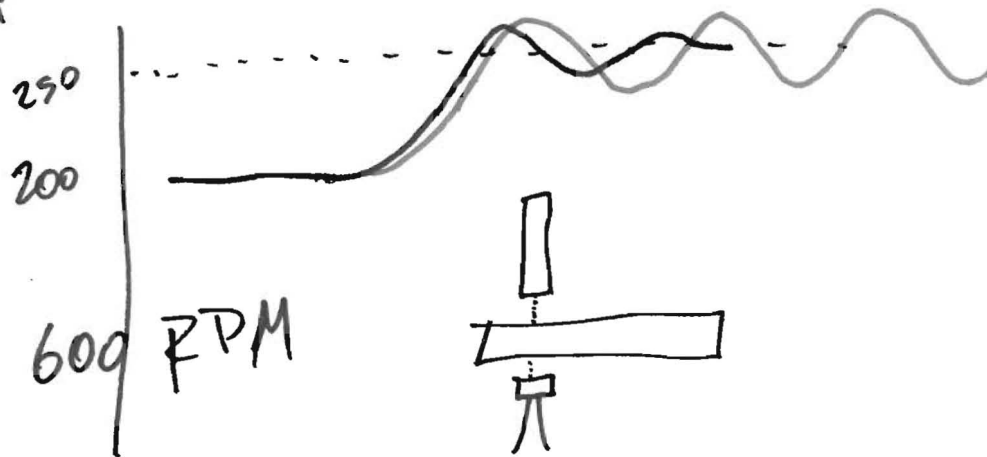
②



- Time sensor
- Wire - short circuit
- Proximity sensor
- Light sensor - photoresistor
- Hall effect
- reflection

- Laser
- Voltage/Current measurement

Freq = 0 to 600 RPM



ECGR 6185 -

4/19/10

Hardware needed

(3)

1. ~~DC~~ motor & paddle
 2. Accelerometer
 3. MSP 430 board
 4. JTAG Device for MSP430
 5. Sensor - rotation
 6. Wires
 7. RS 232 Cable
- A) Renesas