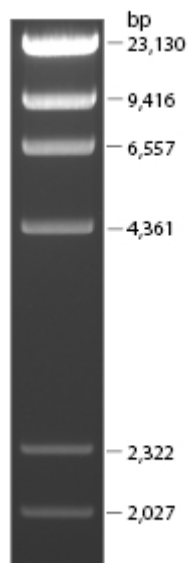
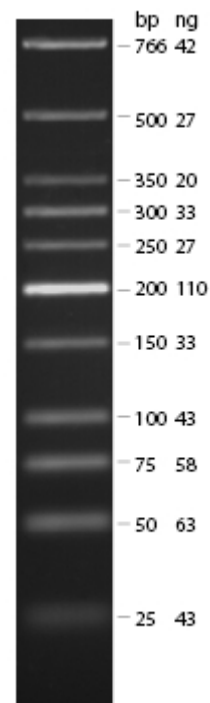


[1.2% Agarose gel]



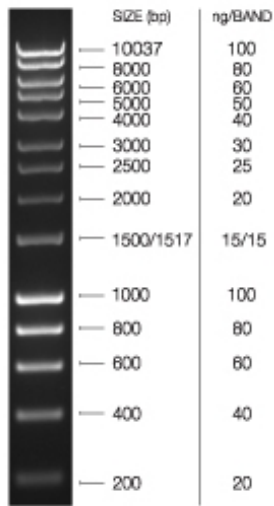
Lambda DNA-HindIII



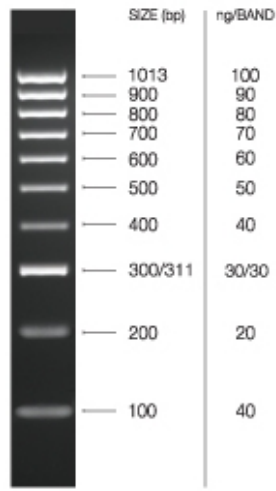
Bionexus Hi-Lo Markers

Promega High MW markers

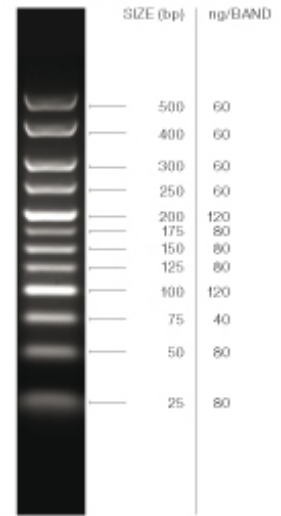
NEB Low MW markers



1% agarose gel
5µl per lane

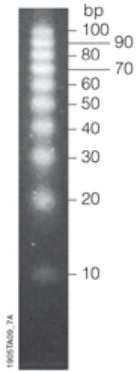


2% agarose gel
5µl per lane



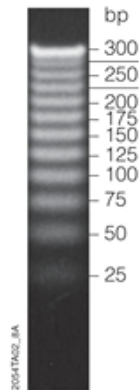
HyperLadder V

Hyperladders sets I, IV and V: both length and mass per band are given.



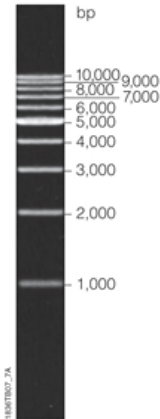
4% agarose
(3% NuSieve® GTG®
agarose/1% agarose)

Figure 1. 10bp DNA Step Ladder. Load 1µl/lane.



2% agarose/TAE

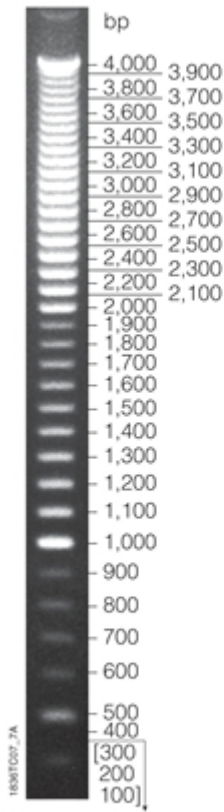
Figure 2. 25bp DNA Step Ladder. Load 5µl/lane.



0.7% agarose

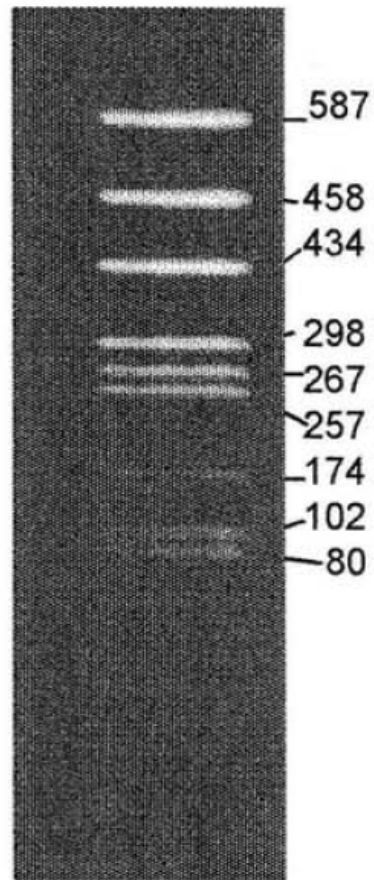
Figure 6. 1kb DNA Step Ladder. Load 1µl/lane.

Promega MW Step-Ladders



1% agarose

Figure 4. 100bp DNA Step Ladder. Load 1 μ l/lane.



Amresco Micromarker (most of you used this on your gels in class. It is a HaeIII digest of pUC18 that yields 11 bands (but the two really small ones don't have the mass to visualize well).