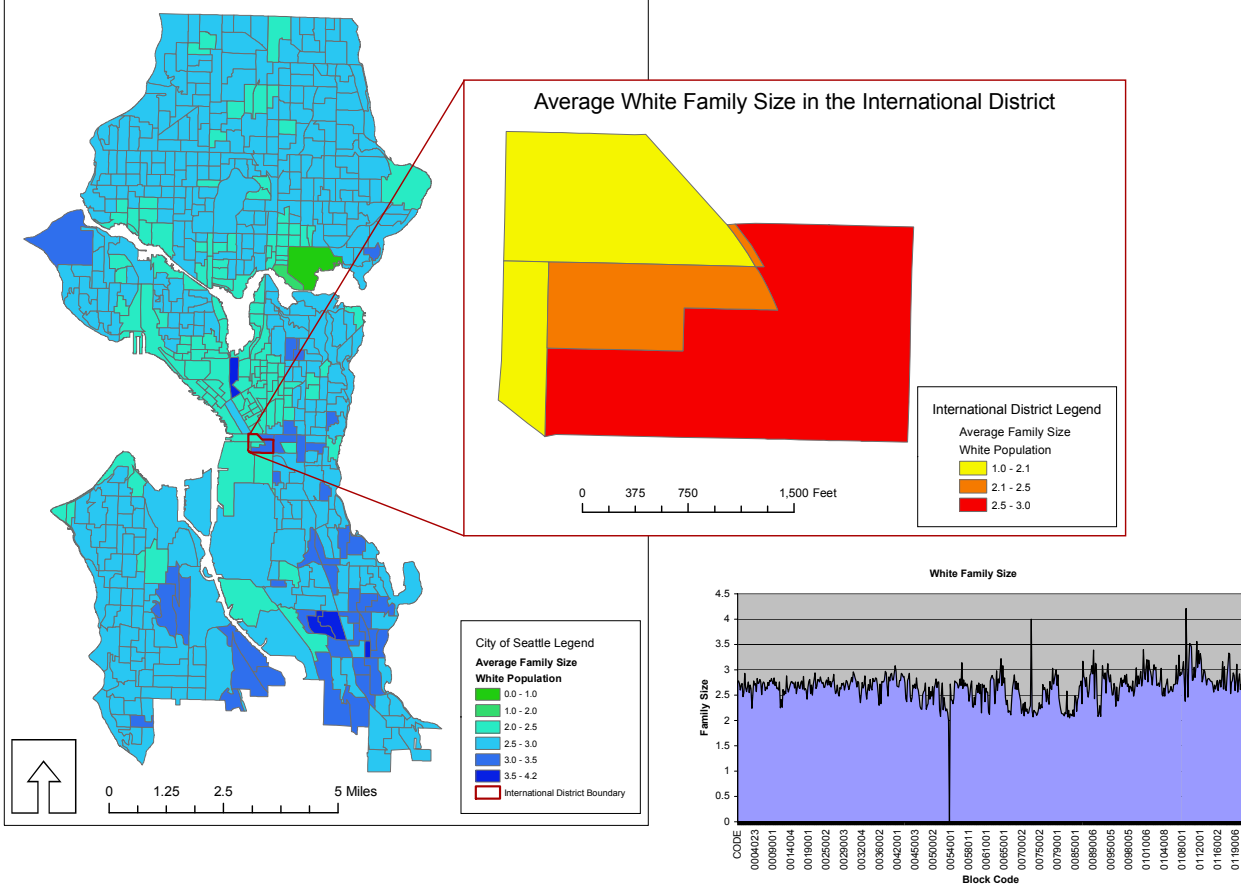


Average Family Size by Race in the City of Seattle

Average White Family Size in Seattle 2000

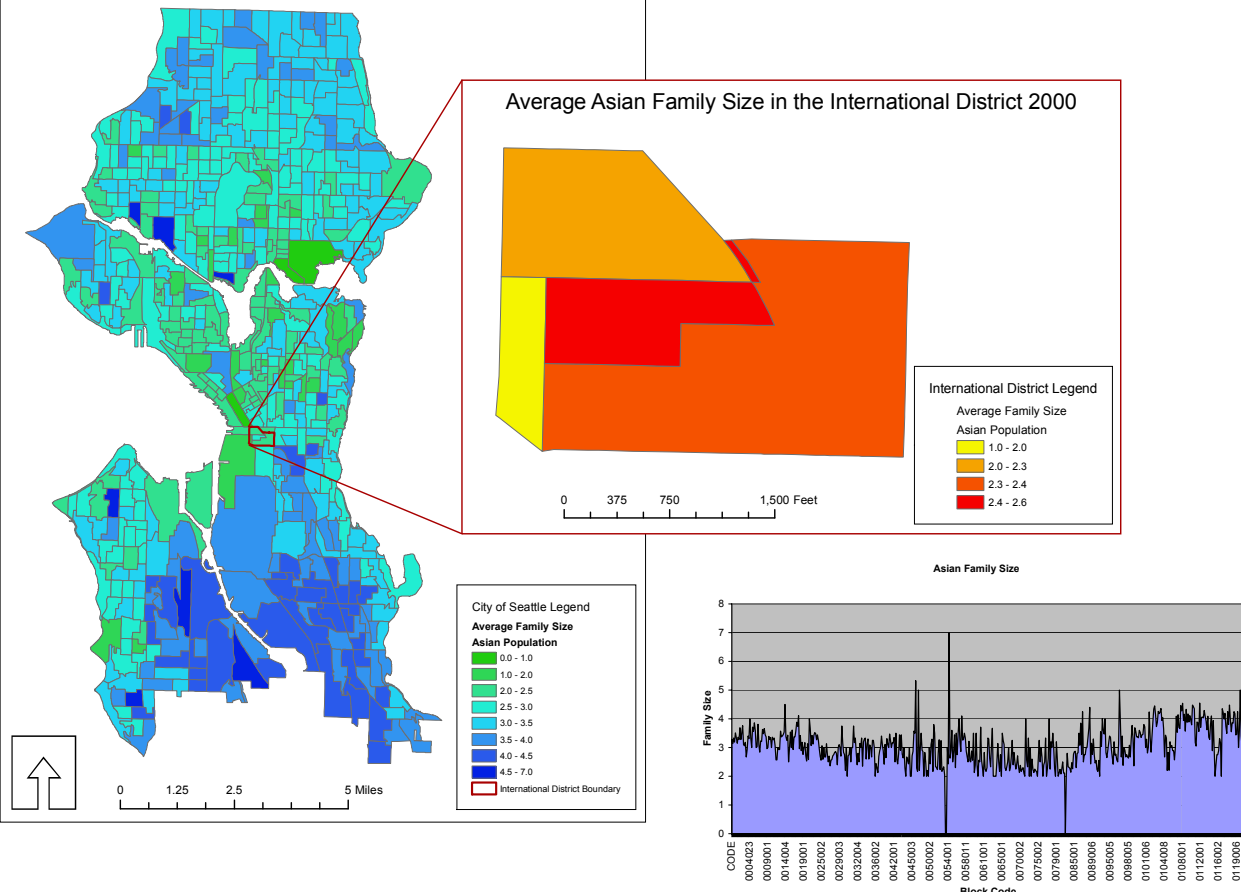


I wanted to view three sets of data that were closely related in order to see connections more clearly. Here are three sets, all concerning family size in the City of Seattle. Each map concerns a different race as delineated by the 2000 census data. The three categories are Black, White and Asian family size.

From the very beginning it was evident that these three sets of information were going to paint a very interesting and telling picture of our city. Symbology was an important factor in being able to present the differences and similarities between the different racial groups presented.

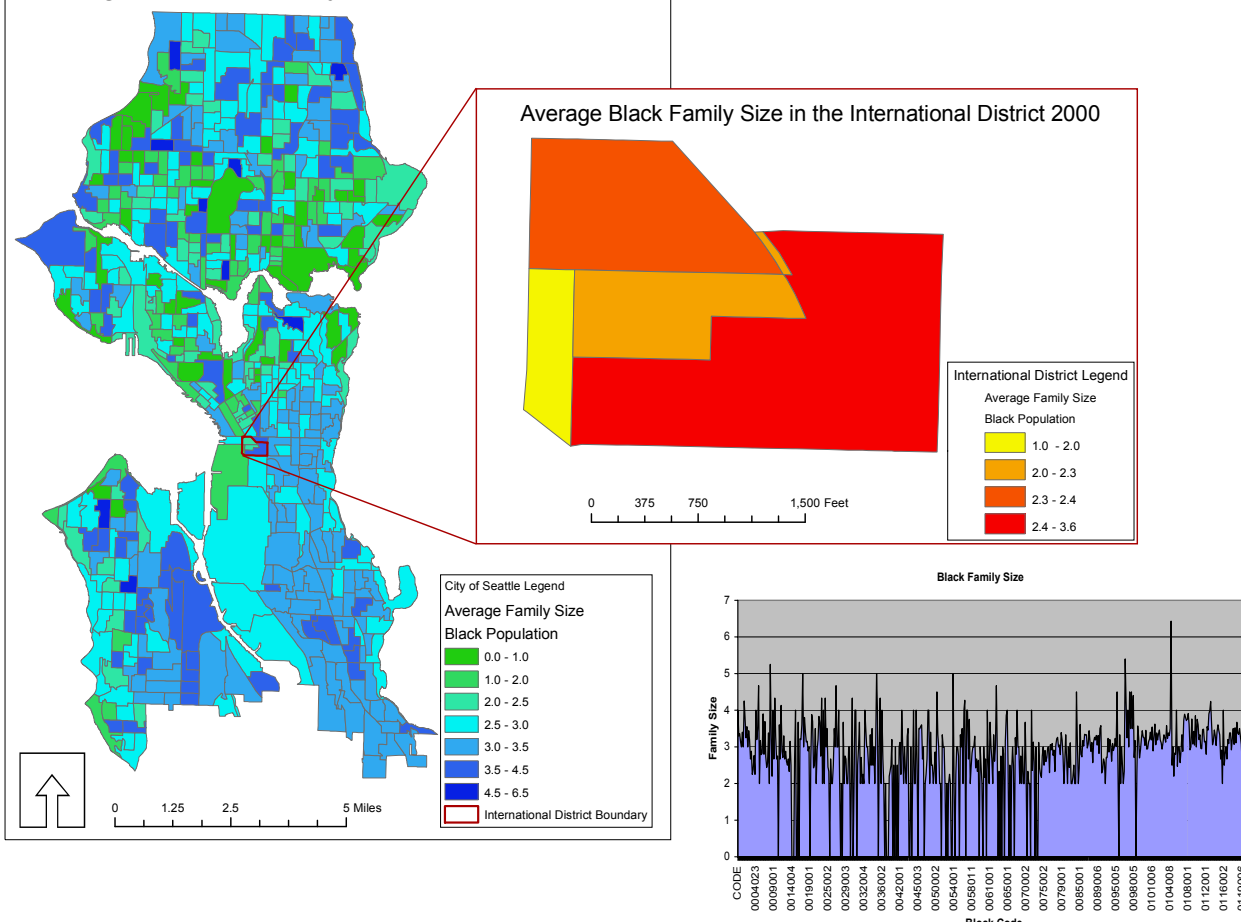
For the White population the family size is typically in a 2-3 range, much smaller than that of Black families (2.5-4.5). Asian families don't seem to correlate with this theme; rather family size seems to differ with location. Some areas have an Asian family size average of 3.5-4 (in South Seattle) while others have a 2.5-3.5 range (in North Seattle). One of the most interesting things displayed by this data is where the family size is very low. In each racial classification besides White, there are areas that have families of 1 person. For the Black families, this occurs in the North part of Seattle, while for Asian families, the smaller family units are in Central Seattle.

Average Asian Family Size in Seattle 2000



In the International District there is very little variation in family size even between the different racial categories. White families tend to be the smallest on the West end of the neighborhood, while Black families take the other end of the spectrum, with families that range up to 3 or 4 people at the East side of the International District. What was most interesting is that Asian family size was quite consistent with the rest of the Seattle area, making no leave of the norm in this predominantly Asian neighborhood.

Average Black Family Size in Seattle 2000



The graphs provided show the information provided by the census data for family size in the City of Seattle. Because of the number of block groups, the information is very detailed, but there is another visual representation of family size by race. It is possible to see how location can be a factor in family size.

Anya Kaufmann, April 2006
Data Source: US 2000 Census Data;
WAGDA City of Seattle, 2005.
Projection: NAD83 State Plane Washington North Feet.